

Argento Tower, SW18
Guide Price: £325,000 - £375,000



WILFORDS
LONDON



Argento Tower, SW18

£325,000 - £375,000

474 sq ft / 44 sq m

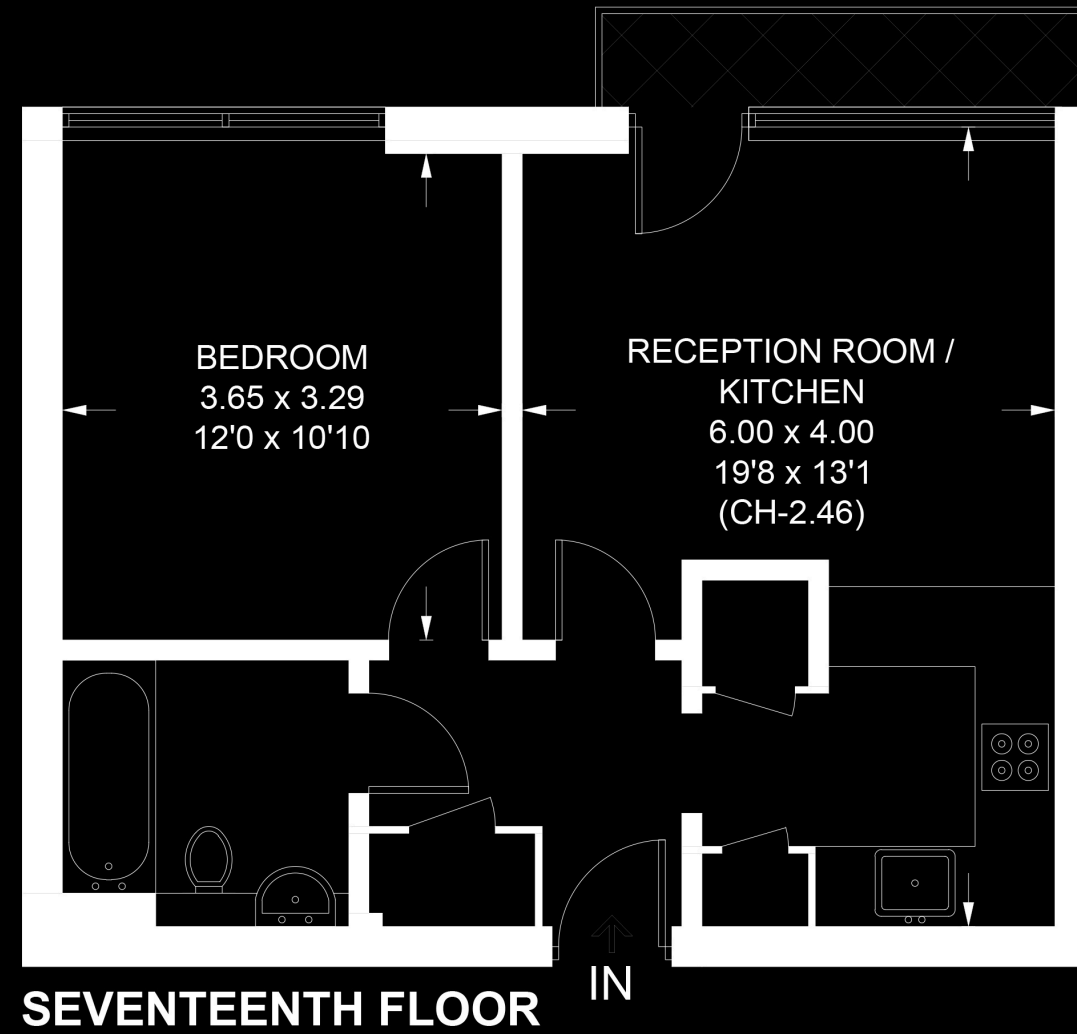
1 Bedroom
1 Bathroom
1 Reception Room
Kitchen
Leasehold

Positioned on the seventeenth floor of a modern development, this well presented apartment offers a clean, efficient layout with far reaching views across London and direct access to a private balcony. The layout is centred around a generous open plan reception room and kitchen, a well proportioned space designed for both day to day living and entertaining.

Mapleton Road is well located for Wandsworth Town and the wider area, with a range of transport links nearby, along with the green open spaces of King George's Park positioned just outside the building. Together with direct access to Southside Shopping Centre, this creates a setting that is both convenient and well connected, suited to both owner occupiers and investors alike.



Approximate Area = 44.0 sq m / 474 sq ft



ARGENTO TOWER, SW18

In accordance with the Property Mis-Description Act 1991, the following details have been prepared in good faith, and are not intended to constitute part of an offer or contract. Any information contained herein (whether in the text, plans or photographs) is given in good faith but should not be relied upon as being a statement of representation of fact. Nothing in these Particulars shall be deemed to be a statement that the property is in good condition or otherwise nor that any services or facilities are in good working order. Any measurements of distances referred to herein are approximate only.

This plan is for layout guidance only. Not drawn to scale unless stated. Windows and door openings are approximate. Whilst every care is taken in preparation of this plan, please check all dimensions, shapes and compass bearings before making any decisions reliant upon them.



186 Northcote Road, SW11 6RE
020 7361 0410
wilfords.com