

Camborne Road, SW18
Guide Price: £1,250,000 - £1,450,000



WILFORDS
LONDON



Camborne Road, SW18

£1,250,000 - £1,450,000

1,621sq ft / 151 sq m

4 Bedrooms

2 Bathrooms

2 Reception Rooms

Kitchen

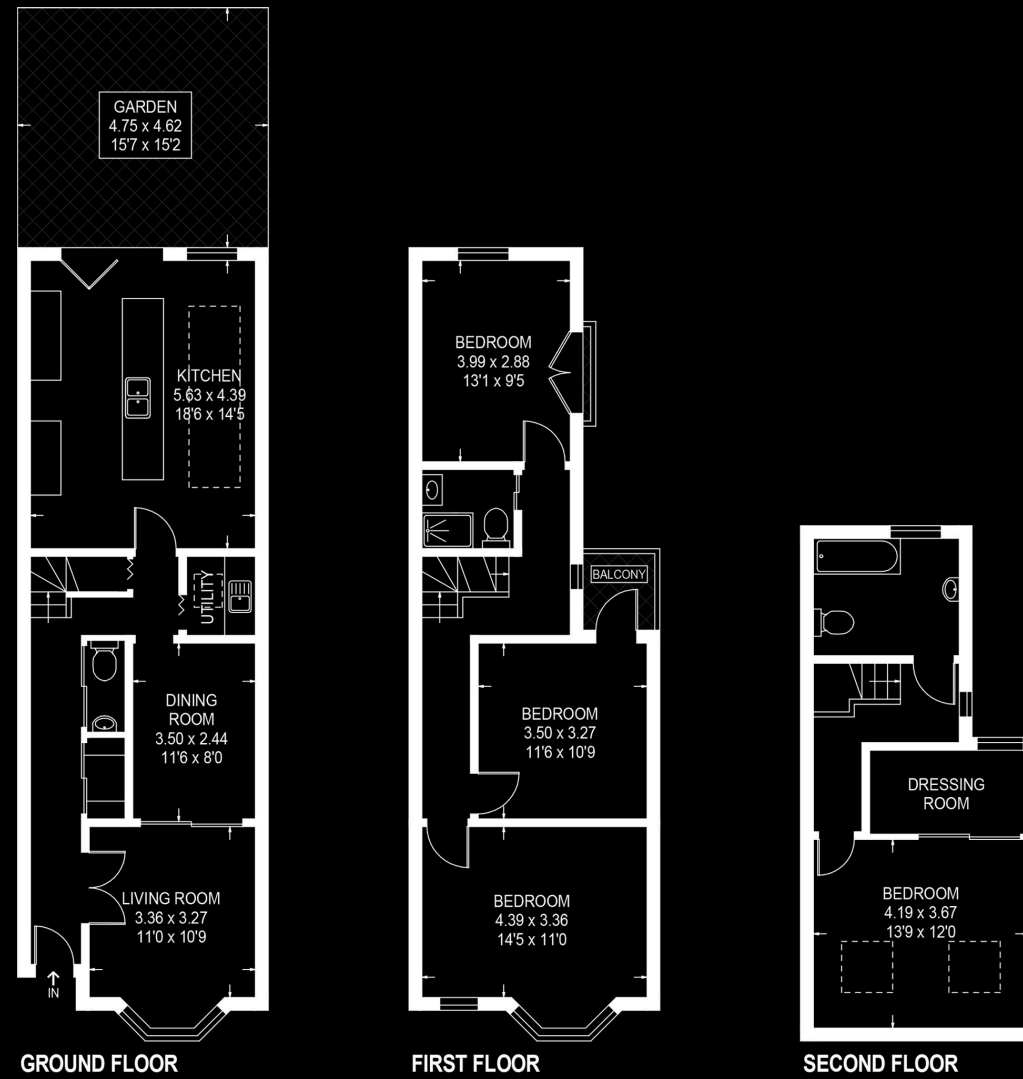
Freehold

Set on leafy residential road, this Victorian house extends to over 1,600 sq ft and has been thoughtfully arranged to balance period character with modern living. As an end of terrace house, it benefits from natural light on three sides, giving a bright and open feel throughout. Wooden flooring runs across the ground floor, complemented by restored period details including a working fireplace in the front reception room.

Camborne Road is a quiet residential street with a strong sense of community, well positioned for the open green spaces of Wandsworth Common and within easy reach of local cafés, shops and leisure facilities. Earlsfield, Southfields and Wandsworth Town stations are all within walking distance, offering convenient transport links, and the area is well regarded for its choice of state and private schools.



Approximate Internal Area = 150.6 sq m / 1621.4 sq ft



CAMBORNE ROAD, SW18

In accordance with the Property Mis-Description Act 1991, the following details have been prepared in good faith, and are not intended to constitute part of an offer or contract. Any information contained herein (whether in the text, plans or photographs) is given in good faith but should not be relied upon as being a statement of representation of fact. Nothing in these Particulars shall be deemed to be a statement that the property is in good condition or otherwise nor that any services or facilities are in good working order. Any measurements of distances referred to herein are approximate only.

This plan is for layout guidance only. Not drawn to scale unless stated. Windows and door openings are approximate. Whilst every care is taken in preparation of this plan, please check all dimensions, shapes and compass bearings before making any decisions reliant upon them.



186 Northcote Road, SW11 6RE
020 7361 0410
wilfords.com