

WELMAR MEWS, ABBEVILLE VILLAGE, SW4  
GUIDE PRICE: £1,250,000 - £1,400,000



WILFORDS  
LONDON

186 Northcote Rd,  
London SW11 6RE  
020 7361 0410

[info@wilfords.com](mailto:info@wilfords.com)

[www.wilfords.com](http://www.wilfords.com)





## WELMAR MEWS, ABBEVILLE VILLAGE, SW4

GUIDE PRICE: £1,250,000 - £1,400,000

1,546 SQ FT / 144 SQ M

3 BEDROOMS | 3 BATHROOMS | 1 RECEPTION | FREEHOLD

A beautiful home, arranged over three storeys and measuring 1,546 Sq. Ft, set within a secure gated mews and benefiting from private off-street parking. Located only moments away from the green spaces of Clapham Common and the charming Abbeville Village.

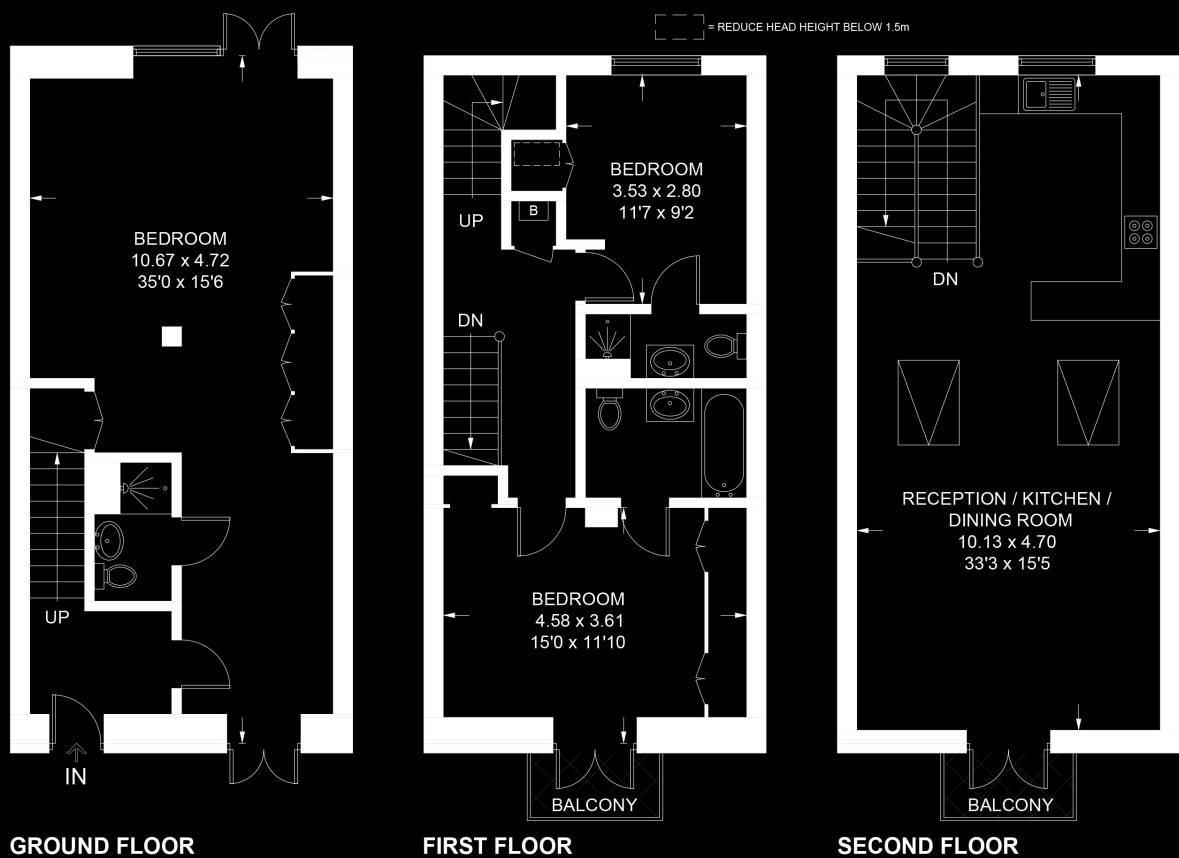
Bursting with character, the property features three double bedrooms with three bathrooms, two of which are en-suite and a vaulted ceiling open plan kitchen/ reception room measuring over 500 Sq. Ft, all of which have been recently renovated by the current owner. This contemporary Mews was once a Victorian Piano Factory, and the house contains many original features to maintain its character and charm.

Acre Lane being within a short stroll of Abbeville Village with its collection of independent boutique establishments and is also well placed for the Northern Line underground station at Clapham Common, 0.6 mile away, providing access to the City and West End. Brixton tube station is 1 mile away and provides direct access to the Victoria Line and Overground services. Clapham Common itself is close to hand and the area is well-served by a selection of pre-school and primary schools in both the state and private schools.

SCAN TO VIEW  
THIS PROPERTY



Approximate Area = 143.6 sq m / 1546 sq ft  
Including Limited Use Area (0.6 sq m / 6 sq ft)



## WELMAR MEWS, ABBEVILLE VILLAGE, SW4

Floor plan for identification purposes only - not to scale.

Misrepresentation Act 1967. This brochure and the descriptions and measurements herein do not constitute representation, and whilst every effort has been made to ensure accuracy, this cannot be guaranteed.

**WILFORDS**  
LONDON

186 Northcote Rd,  
London SW11 6RE  
020 7361 0410

info@wilfords.com

www.wilfords.com