

EARLSFIELD ROAD, WANDSWORTH, SW18
GUIDE PRICE: £550,000 - £650,000



WILFORDS
LONDON

186 Northcote Rd.
London SW11 6RE
020 7361 0410

info@wilfords.com

www.wilfords.com



EARLSFIELD ROAD, WANDSWORTH, SW18

GUIDE PRICE: £550,000 - £650,000

745 SQ FT / 69 SQ M

2 BEDROOMS | 1 BATHROOM | 1 RECEPTION | SHARE OF FREEHOLD

A truly immaculate and well-presented two-bedroom apartment, set on the second floor within a Victorian terraced house, merely a short stroll away from the open green space of Wandsworth Common.

This two-bedroom apartment comes to market after being expertly and thoughtfully renovated by the current owners to an exquisite level. The property boasts a design led layout and interior throughout.

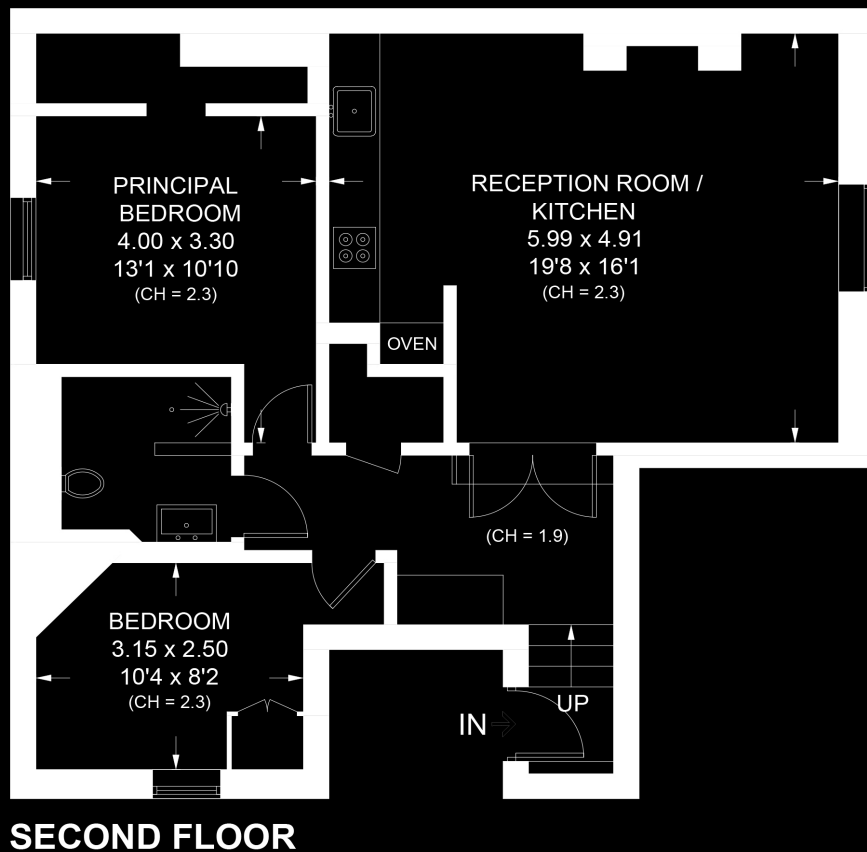
As you step inside, you are greeted by a bespoke bar area, perfect for entertaining guests. Crittall-style doors lead to the stunning open plan reception room and kitchen. Flooded with natural light displaying the luxury fitted kitchen with marble tops and splashback, leaving ample space for a dining table. There are two bright double bedrooms and a contemporary shower room. There is also off-street parking at the back of the property.

The apartment is located moments from Wandsworth Common, within walking distance to shops, bars and restaurants local to Northcote Road and Earlsfield. Mainline stations at Clapham Junction, Wandsworth Town and Earlsfield are just a short walk away.

SCAN TO VIEW
THIS PROPERTY



Approximate Area = 69.2 sq m / 745 sq ft



EARLSFIELD ROAD, WANDSWORTH, SW18

Floor plan for identification purposes only - not to scale.

Misrepresentation Act 1967. This brochure and the descriptions and measurements herein do not constitute representation, and whilst every effort has been made to ensure accuracy, this cannot be guaranteed.

WILFORDS
LONDON

186 Northcote Rd,
London SW11 6RE
020 7361 0410

info@wilfords.com

www.wilfords.com