

ELMS CRESCENT, ABBEVILLE VILLAGE, SW4
GUIDE PRICE: £1,900,000 - £2,000,000



WILFORDS
LONDON

186 Northcote Rd,
London SW11 6RE
020 7361 0410

info@wilfords.com

www.wilfords.com



ELMS CRESCENT, ABBEVILLE VILLAGE, SW4

GUIDE PRICE: £1,900,000 - £2,000,000

2,160 SQ FT / 201 SQ M

5 BEDROOMS | 3 BATHROOMS | 2 RECEPTIONS | FREEHOLD

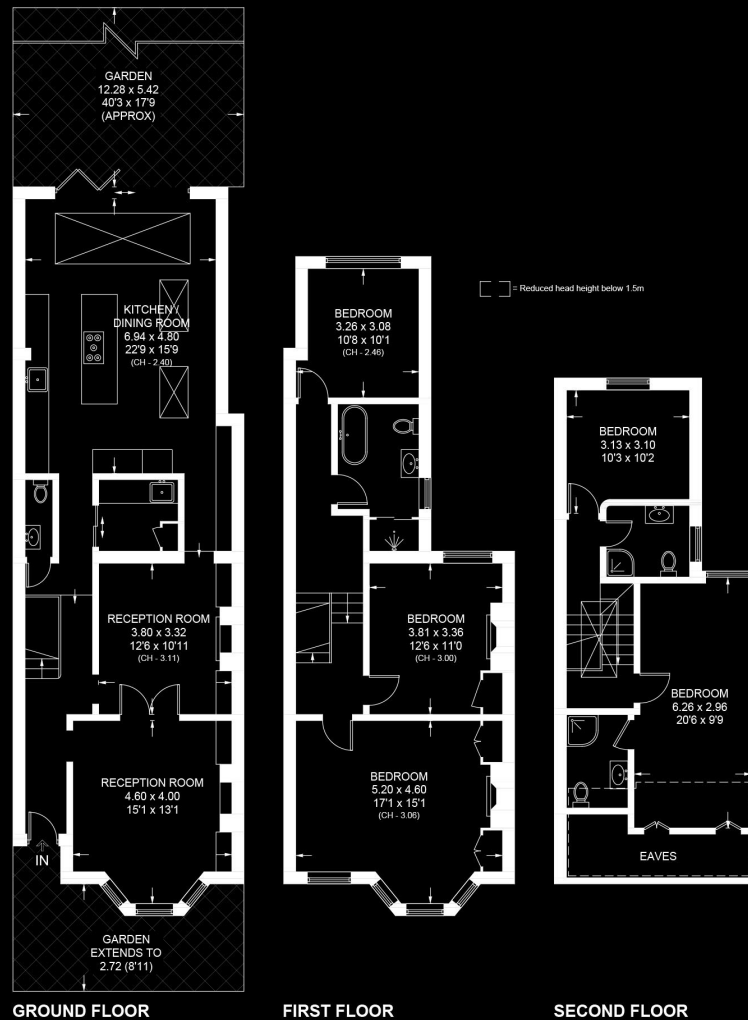
A very well presented terraced Victorian family house which comprises five double bedrooms, served by three bath/shower rooms and a ground floor W.C. Retaining fine period features and having been extensively extended it also benefits from a larger than average southerly facing rear garden.

Abbeville Village is consistently sought after due to its proximity to Clapham Common and a choice of underground stations at Clapham South and Clapham Common. Moreover, the area is awash with pre-school and primary schools in both the state and private sectors, plus Abbeville Road itself is home to an array of independent boutique shops, coffee shops, bars and restaurants.

SCAN TO VIEW
THIS PROPERTY



Approximate Area = 200.7 sq m / 2160 sq ft
Including Limited Use Area (11.4 sq m / 123 sq ft)



ELMS CRESCENT, ABBEVILLE VILLAGE, SW4

Floor plan for identification purposes only - not to scale.

Misrepresentation Act 1967. This brochure and the descriptions and measurements herein do not constitute representation, and whilst every effort has been made to ensure accuracy, this cannot be guaranteed.

WILFORDS
LONDON

186 Northcote Rd,
London SW11 6RE
020 7361 0410

info@wilfords.com

www.wilfords.com