

LADBROKE GROVE, NOTTING HILL, W10  
GUIDE PRICE: £700,000 - £800,000



# WILFORDS

LONDON

6 Holland Street  
London W8 4LT  
020 7361 0400

[info@wilfords.com](mailto:info@wilfords.com)

[www.wilfords.com](http://www.wilfords.com)





## LADBROKE GROVE, NOTTING HILL, W10

GUIDE PRICE: £700,000 - £800,000

679 SQ FT / 63 SQ M

2 BEDROOMS | 1 BATHROOM | 1 RECEPTION | SHARE OF FREEHOLD

A fantastic two bedroom apartment, set on the first floor of a well maintained period building. With classic first floor high ceiling and proportions, this lovely, bright two bedroom apartment is well presented and located in the heart of Notting Hill.

The open plan living room and kitchen is flooded with natural light from the large bay window. Both bedrooms are built in storage and offers good accommodation.

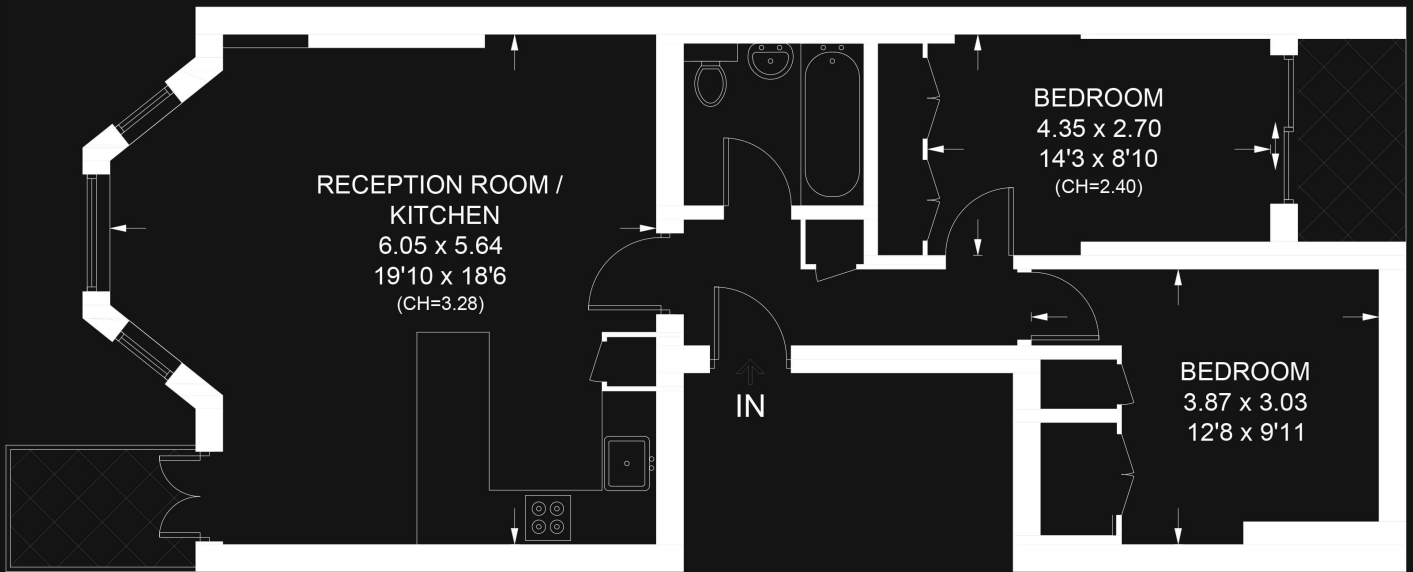
Finally, there is a stylish family bathroom. The property features two outdoor balconies – one front balcony facing east, and there is also a west-facing rear balcony.

SCAN TO VIEW  
THIS PROPERTY





Approximate Gross Internal Area = 63.1 sq m / 679 sq ft



**FIRST FLOOR**

## LADBROKE GROVE, NOTTING HILL, W10

Floor plan for identification purposes only - not to scale.

Misrepresentation Act 1967. This brochure and the descriptions and measurements herein do not constitute representation, and whilst every effort has been made to ensure accuracy, this cannot be guaranteed.

**WILFORDS**  
LONDON

6 Holland Street  
London W8 4LT  
020 7361 0400

info@wilfords.com

www.wilfords.com