

SIMON COURT, W9



WILFORDS  
LONDON

6 Holland Street, W8 4LT  
info@wilfords.com

020 7361 0400

wilfords.com

## SIMON COURT, W9

2 BEDROOMS | 2 BATHROOMS | 1 RECEPTION ROOMS | KITCHEN | GARDEN | LEASEHOLD | 1077 SQFT | 101.1 SQM

Saltram Crescent, this rare and unique two bedroom/two bathroom ground floor apartment is presented with modern interiors and benefits from wonderful original features and a large private patio garden.

The property is not only beautifully presented throughout but it is located in a fabulous part of Queens Park, moments away from Salusbury Road (Queens Park), Notting Hill, Maida Vale and Little Venice.

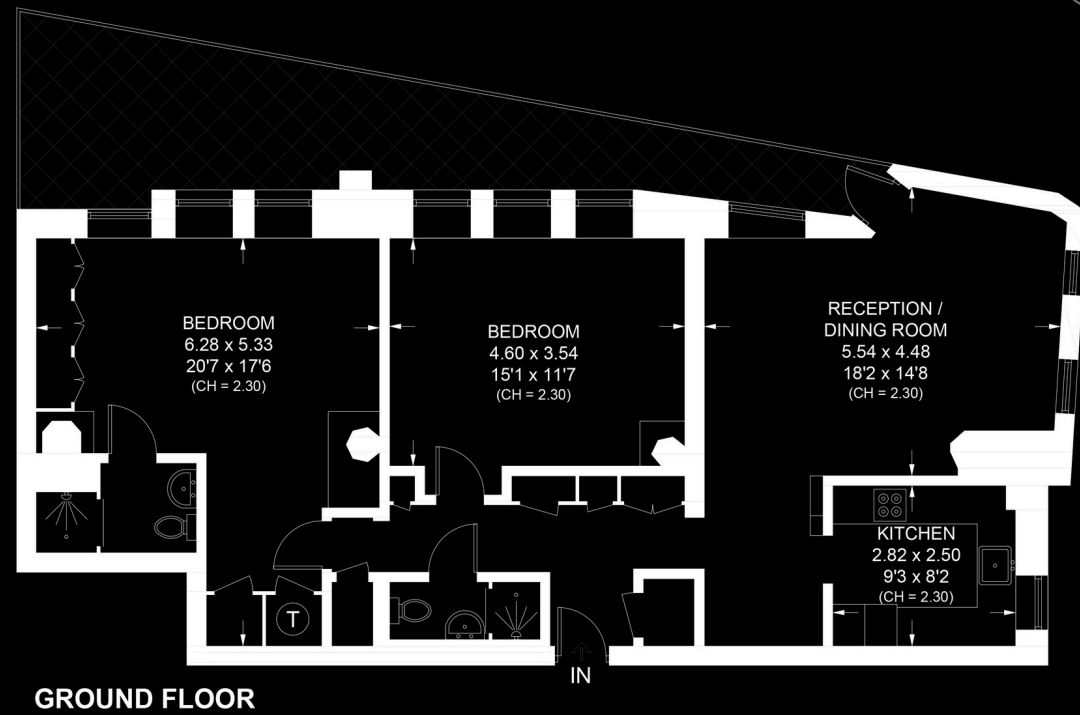
The area offers multiple shops, cafes and restaurants as well as lovely walks along the canal, local parks etc.

Saltram Crescent is a short walk from Queens Park Underground (Bakerloo Line) and Westbourne Park (Hammersmith and City, and Circle lines).

Please be advised that some interior images in this listing have been digitally staged using AI technology.



Approximate Gross Internal Area = 101.1 sq m / 1077 sq ft



## SIMON COURT, W9

In accordance with the Property Mis-Description Act 1991, the following details have been prepared in good faith, and are not intended to constitute part of an offer or contract. Any information contained herein (whether in the text, plans or photographs) is given in good faith but should not be relied upon as being a statement of representation of fact. Nothing in these Particulars shall be deemed to be a statement that the property is in good condition or otherwise nor that any services or facilities are in good working order. Any measurements of distances referred to herein are approximate only.

This plan is for layout guidance only. Not drawn to scale unless stated. Windows and door openings are approximate. Whilst every care is taken in preparation of this plan, please check all dimensions, shapes and compass bearings before making any decisions reliant upon them.

**WILFORDS**  
LONDON

020 7361 0400

6 Holland Street, W8 4LT  
info@wilfords.com

wilfords.com

