

CROMWELL ROAD, SW5



WILFORDS

LONDON

6 Holland Street, W8 4LT  
info@wilfords.com

020 7361 0400

wilfords.com





## CROMWELL ROAD, SW5

1 BEDROOM | 1 BATHROOM | 1 RECEPTION ROOM | KITCHEN | LEASEHOLD | 479 SQ FT | 44.5 SQ M

A very well presented one-bedroom apartment, boasting high ceilings, situated in a Victorian conversion in Kensington. There is a lift to the property should one be required.

A charming one-bedroom apartment situated on the third floor (with lift) of a stunning Victorian conversion, featuring high ceilings throughout.

The bright reception room and kitchen is open-plan with light flooding in from two large sash windows, creating a warm and inviting ambience. The sleek contemporary kitchen is equipped with modern appliances and features double overhead cabinets with downlights, adding a touch of luxury to the space.

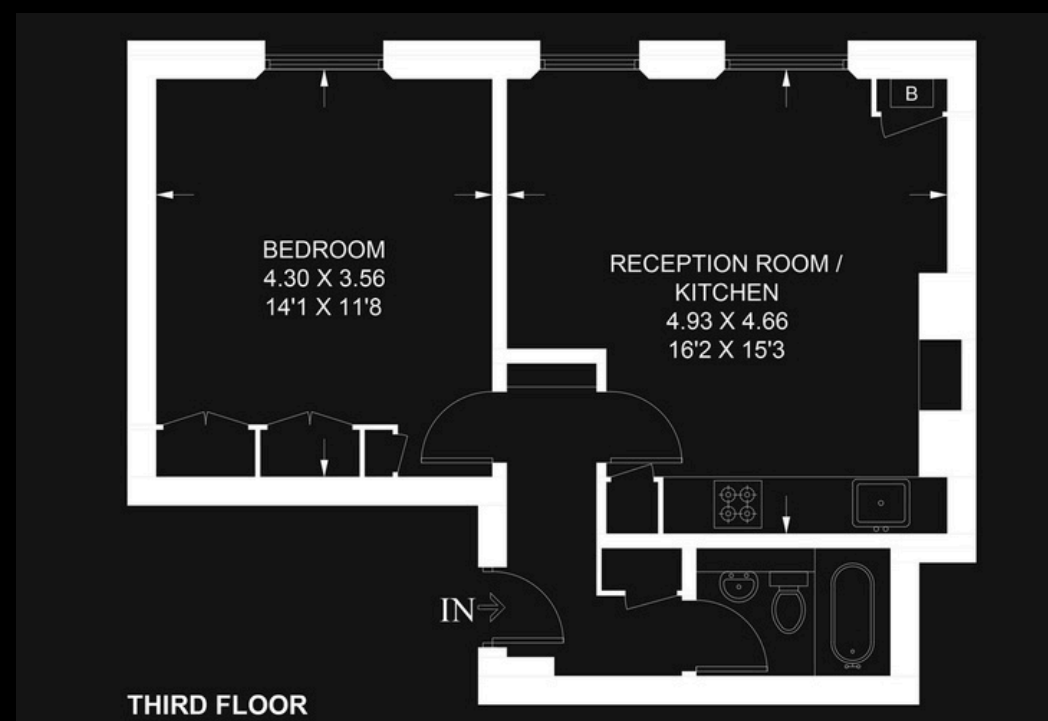
The bedroom offers ample space and light, complemented by two double wardrobes with top cupboards for convenient storage, while the stylish contemporary bathroom boasts a combination shower, heated towel rack, and mirrored cabinets.

Additional storage in the hallway enhances practicality, further enhancing the functionality of this well-appointed apartment.





Approximate Gross Internal Area = 44.5 sq m / 479 sq ft



## CROMWELL ROAD, SW5

In accordance with the Property Mis-Description Act 1991, the following details have been prepared in good faith, and are not intended to constitute part of an offer or contract. Any information contained herein (whether in the text, plans or photographs) is given in good faith but should not be relied upon as being a statement of representation of fact. Nothing in these Particulars shall be deemed to be a statement that the property is in good condition or otherwise nor that any services or facilities are in good working order. Any measurements of distances referred to herein are approximate only.

This plan is for layout guidance only. Not drawn to scale unless stated. Windows and door openings are approximate. Whilst every care is taken in preparation of this plan, please check all dimensions, shapes and compass bearings before making any decisions reliant upon them.

**WILFORDS**  
LONDON

6 Holland Street, W8 4LT  
info@wilfords.com

020 7361 0400

wilfords.com

