

ONSLow MEWS WEST, KENSINGTON, SW7
GUIDE PRICE: £4,000,000 - £4,500,000



WILFORDS
LONDON

6 Holland Street
London W8 4LT
020 7361 0400

info@wilfords.com

www.wilfords.com



ONSLow MEWS WEST, KENSINGTON, SW7

GUIDE PRICE: £4,000,000 - £4,500,000

2,586 SQ FT / 240 SQ M
3 BEDROOMS | 3 BATHROOMS | 2 RECEPTION | FREEHOLD

Nestled in one of London's finest locations, this three-bedroom double fronted mews house, spread over three floors, offers 2,586 sq. ft of lateral space. Having been refurbished by Florio Bilinski Design using the highest quality of materials and the finest craftsmanship, every detail of this exceptional home has been meticulously designed.

Upon entering, you'll be greeted by a grand reception room, featuring sleek wooden flooring, and flooded with natural light from the expansive windows either side of a showstopping chimney breast with a contemporary fireplace and built-in tv. The ground floor also hosts a bedroom suite with ample storage space and a modern bathroom, as well as a garage.

Descending the striking free-floating staircase enclosed within a glass wall, you'll discover a super-sized multifunctional living room, dining room and kitchen space. Illuminated by a magnificent chandelier and glass sections in the ceiling, this area is a haven of light and luxury. The kitchen is fitted with top-of-the-line Gaggenau appliances, including two ovens and a wine fridge, and features a breakfast bar island. The sofa area boasts another impressive chimney breast. On this lower ground floor there is also a laundry room, storage room and cloakroom for added convenience.

The first floor is truly special, with vaulted ceiling and exposed wooden beams: a lovely nod to the history of the heritage of these buildings. The master bedroom is a spacious retreat, complete with fitted wardrobes, a built-in dressing table, fireplace, TV, and floor-to-ceiling balcony doors. The luxurious en suite bathroom features both a shower and a bath, as well as his and her sinks. The second bedroom, also generously sized, boasts an en suite and floor-to-ceiling balcony doors.

Located just North of South Kensington's premiere garden square, Onslow Mews West offers a prime address within walking distance of Old Brompton Road, South Kensington Underground station, and the lush greenery of Kensington Gardens and Hyde Park.

**SCAN TO VIEW
THIS PROPERTY**



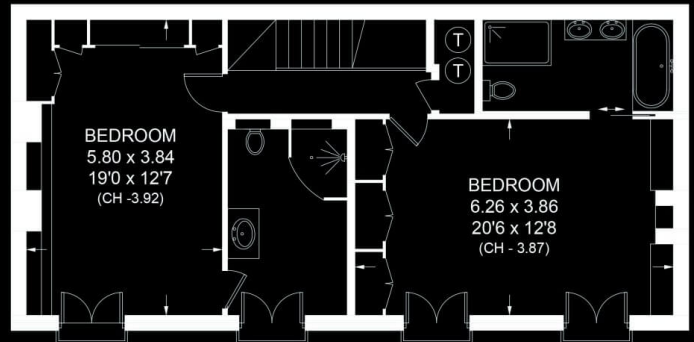
Approximate Gross Internal Area = 2,586 sq m / 240 sq ft



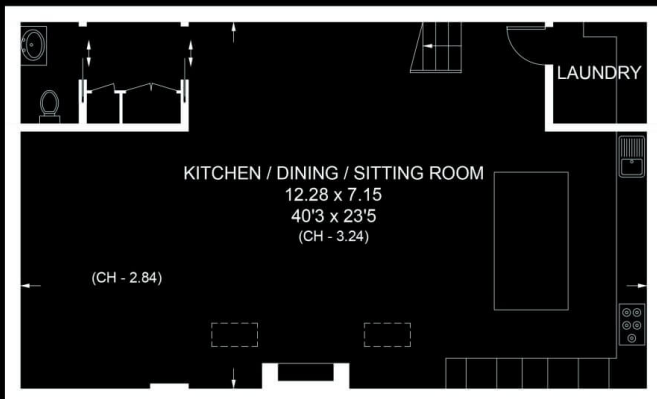
 = REDUCED HEADROOM BELOW 1.5M / 5'0



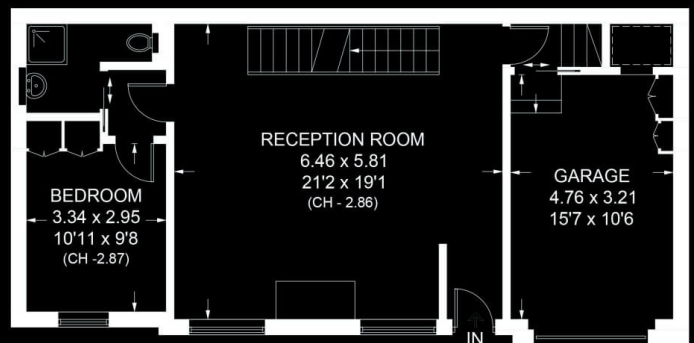
**LOWER GROUND FLOOR
HALF LANDING**



FIRST FLOOR



LOWER GROUND FLOOR



GROUND FLOOR

ONSLOW MEWS WEST, KENSINGTON, SW7

Floor plan for identification purposes only - not to scale.

Misrepresentation Act 1967. This brochure and the descriptions and measurements herein do not constitute representation, and whilst every effort has been made to ensure accuracy, this cannot be guaranteed.

WILFORDS
LONDON

6 Holland Street
London W8 4LT
020 7361 0400

info@wilfords.com

www.wilfords.com