

ELSHAM ROAD, W14



WILFORDS
LONDON

6 Holland Street, W8 4LT
info@wilfords.com

020 7361 0400

wilfords.com



ELSHAM ROAD, W14

2 BEDROOMS | 1 BATHROOMS | 1 RECEPTION ROOMS | KITCHEN | SHARE OF FREEHOLD | 2,303 SQ FT | 214 SQ M

An elegant and beautifully appointed two bedroom first flat flooded with natural light. Boasting wooden flooring and stylish fixtures and fittings throughout.

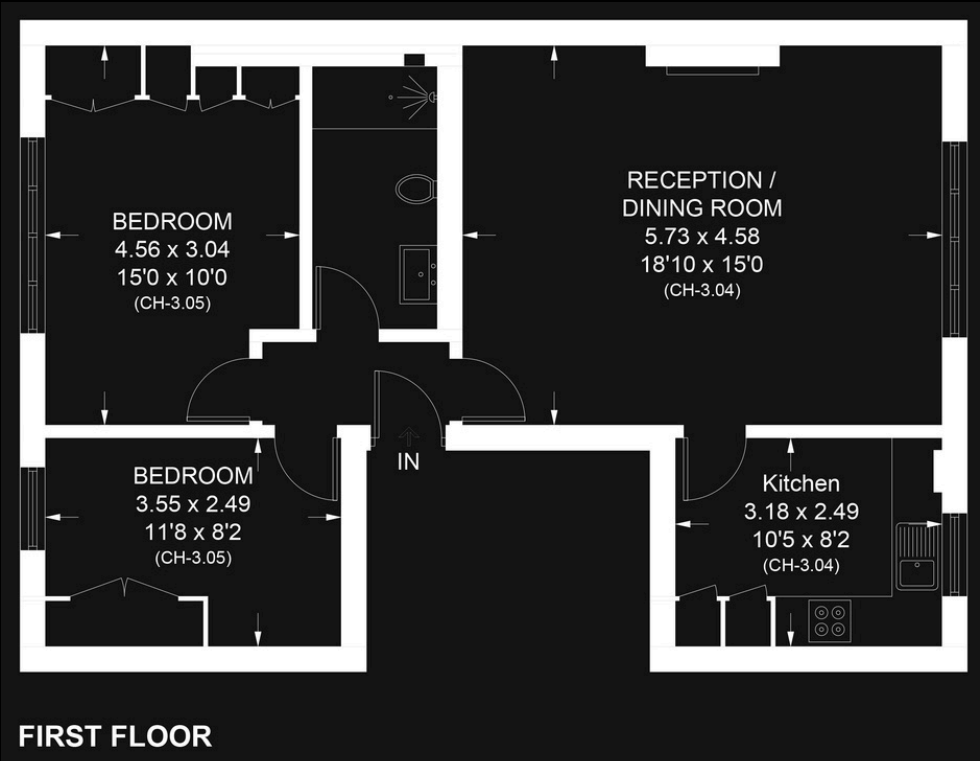
A beautifully refurbished and well proportioned apartment which has been extensively remodelled to accommodate two separate bedroom suites with two stylish bathrooms.

Set on the ground floor of a period building close to Holland Park, the property also features a sleek, fully fitted semi open plan kitchen, leading to a large reception room with a separate dining area.

The apartment further features hard wood flooring, an awesome West facing garden and fabulous storage space.



Approximate Gross Internal Area = 68.1sq m / 733 sq ft



ELSHAM ROAD, W14

In accordance with the Property Mis-Description Act 1991, the following details have been prepared in good faith, and are not intended to constitute part of an offer or contract. Any information contained herein (whether in the text, plans or photographs) is given in good faith but should not be relied upon as being a statement of representation of fact. Nothing in these Particulars shall be deemed to be a statement that the property is in good condition or otherwise nor that any services or facilities are in good working order. Any measurements of distances referred to herein are approximate only.

This plan is for layout guidance only. Not drawn to scale unless stated. Windows and door openings are approximate. Whilst every care is taken in preparation of this plan, please check all dimensions, shapes and compass bearings before making any decisions reliant upon them.

WILFORDS
LONDON

020 7361 0400

6 Holland Street, W8 4LT
info@wilfords.com

wilfords.com

