

BYWATER STREET, SW3

£2.5M



WILFORDS

LONDON

6 Holland Street, W8 4LT
info@wilfords.com

+44 (0)20 7361 0400

wilfords.com



BYWATER STREET, SW3

£2.5M

1635 SQ. FT / 151 SQ. M | 3/4 BEDROOMS | HOUSE | FREEHOLD
ROYAL BOROUGH OF KENSINGTON & CHELSEA

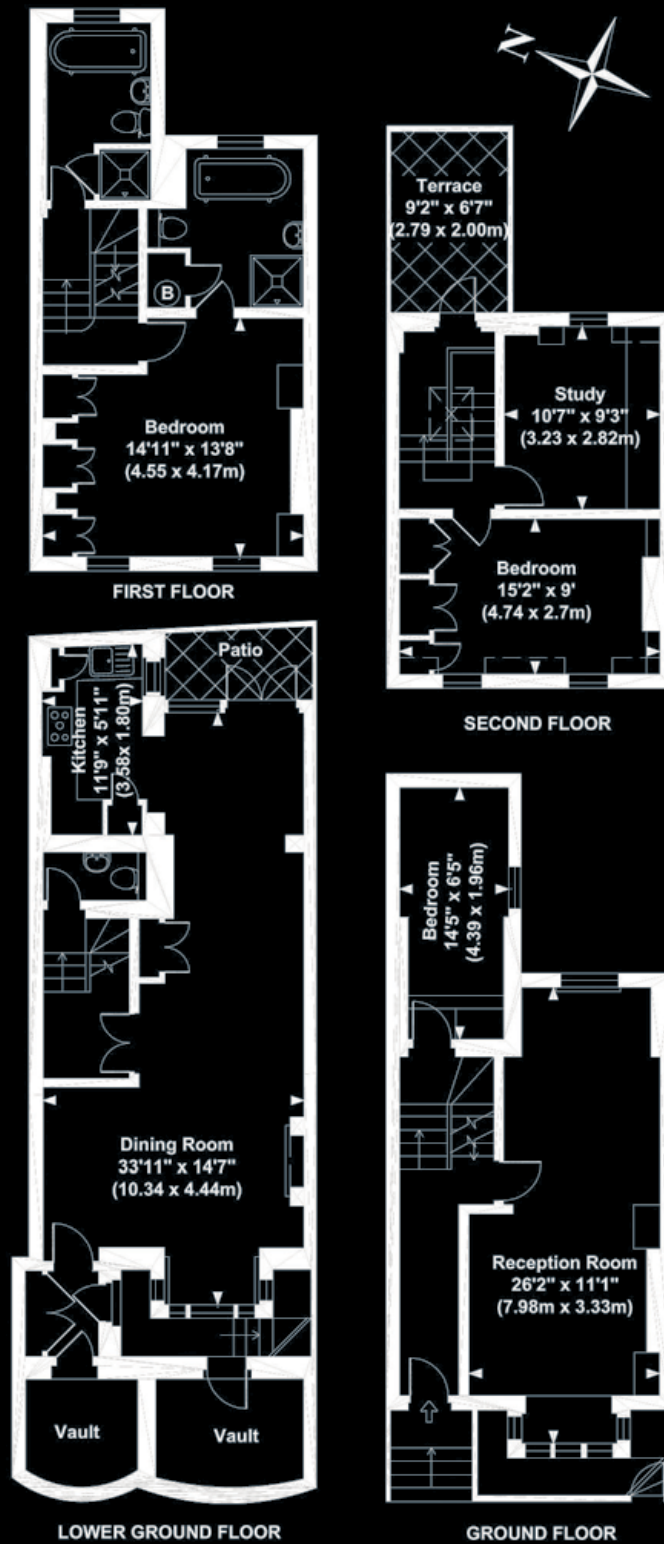
A beautiful and stylish townhouse, located on this desirable cul de sac off the world famous Kings Road in Chelsea.

- * ELEGANT TOWN HOUSE COMBINING CONTEMPORARY DETAIL AND TRADITIONAL FEATURES
- * ARRANGED OVER FOUR FLOORS
- * TWO RECEPTION ROOMS
- * OPEN PLAN KITCHEN / DINING ROOM
- * THREE BEDROOMS
- * FOURTH BEDROOM/STUDY
- * TWO ELEGANT BATHROOMS
- * ROOF TERRACE
- * CLOAKROOM

Kings Road is a shoppers paradise with world famous designer boutiques, restaurants and nightlife close by. Sloane Square Underground Station (Circle and District Lines) is just moments away.

In accordance with the Estate Agents Act 1979 we would like to inform you that the vendor of this property is associated with Wilfords London.





APPROX. GROSS INTERNAL FLOOR AREA 1635 SQ.FT / 151 SQ.M

Floor plan for identification purposes only - not to scale

Misrepresentation Act 1967.

This brochure and the descriptions and measurements herein do not constitute representation and whilst every effort has been made to ensure accuracy, this cannot be guaranteed.

WILFORDS
LONDON

6 Holland Street, W8 4LT
info@wilfords.com

+44 (0)20 7361 0400

wilfords.com